

# FOR LEASE | ± 7,609 SF

11787 Cardinal Circle  
Garden Grove, CA



## ADVANCED NOTICE!

### PROPERTY FEATURES

- Part of a Larger 16,000 SF Building
- ± 2,455 SF of Office
- Two (2) Ground Level Loading Doors
- 15' Warehouse Clearance
- Shared Fenced Yard
- Bonus Mezzanine Storage
- 2:1,000 Parking Ratio
- Excellent Manufacturing Unit
- Immediate Freeway Access



**MIKE BOUMA, SIOR**  
Senior Vice President  
714.935.2340  
mbouma@voitco.com  
Lic. #01070753

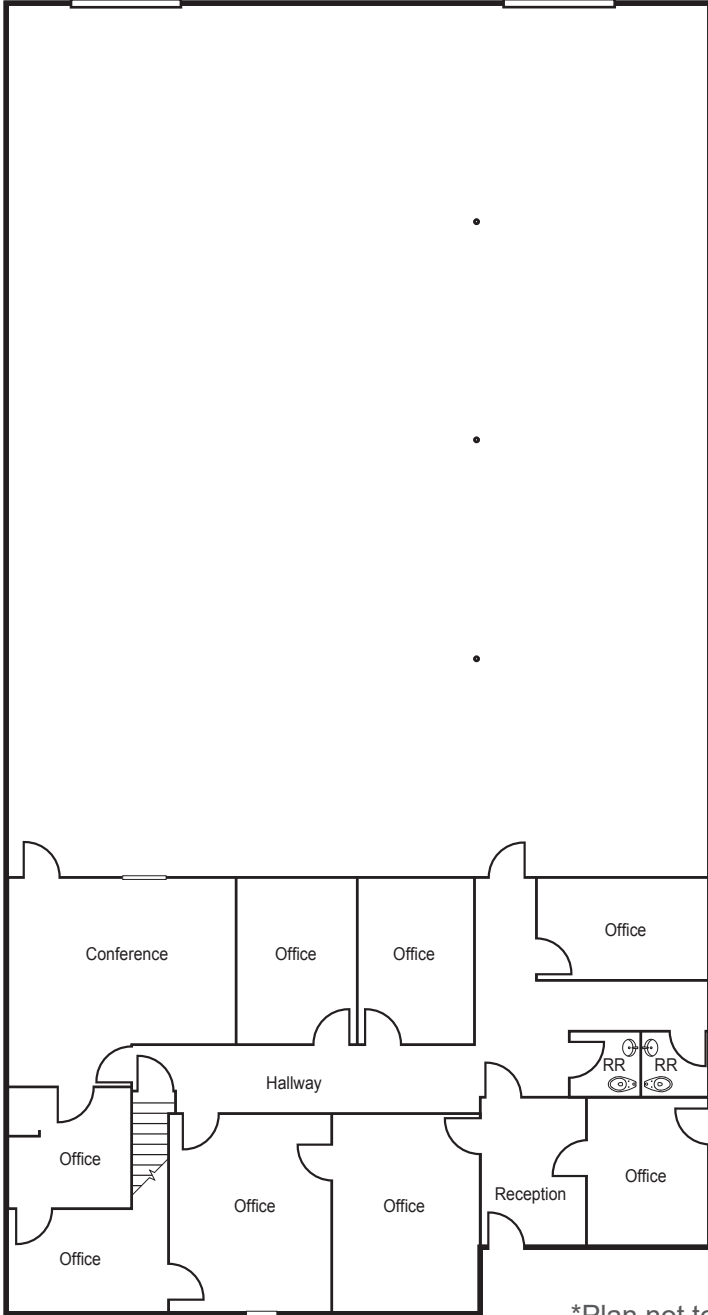
**ERIC SMITH**  
Vice President  
714.935.2310  
esmith@voitco.com  
Lic. #01940591

**Voit**  
REAL ESTATE SERVICES

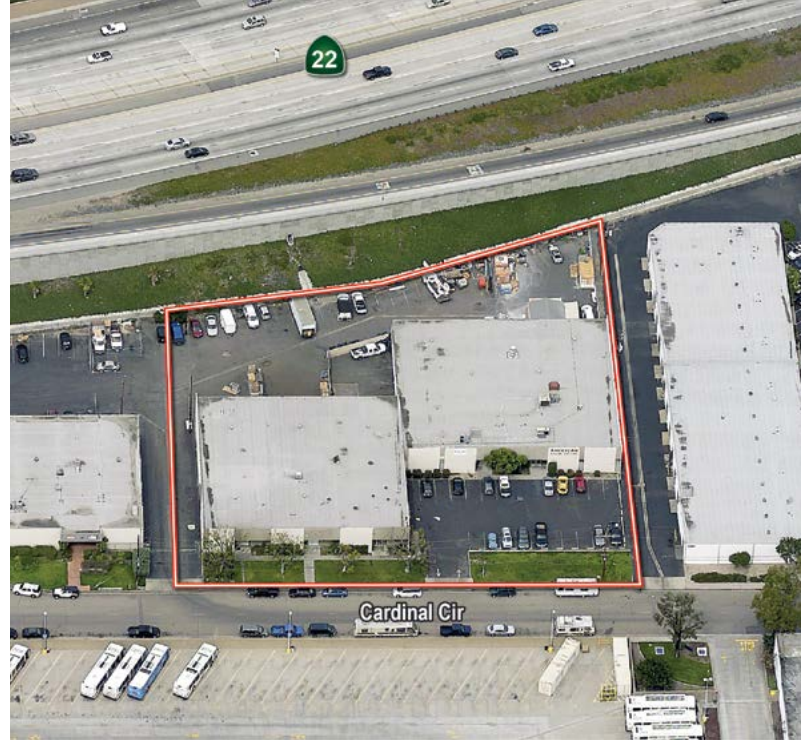
# FOR LEASE | ± 7,609 SF

11787 Cardinal Circle  
Garden Grove, CA

## FLOOR PLAN & AERIAL



\*Plan not to scale



**MIKE BOUMA, SIOR**  
Senior Vice President  
714.935.2340  
mbouma@voitco.com  
Lic. #01070753

**ERIC SMITH**  
Vice President  
714.935.2310  
esmith@voitco.com  
Lic. #01940591

**Voit**  
REAL ESTATE SERVICES